

The Kingsford

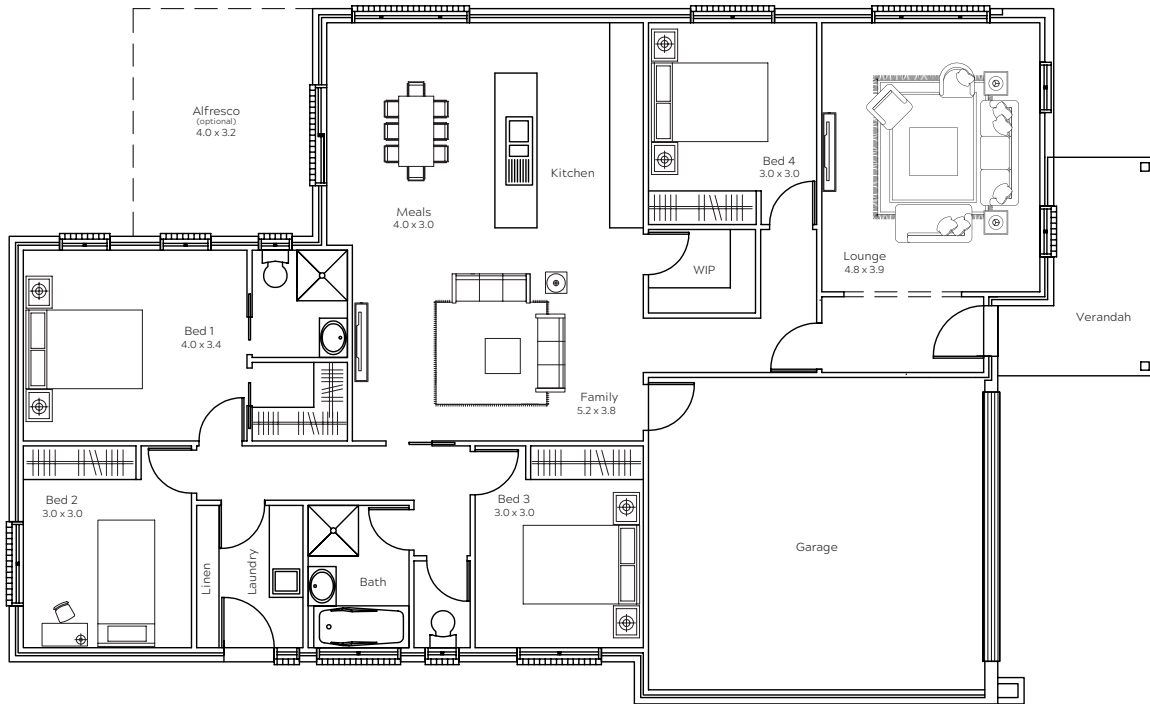


4 2 2

1300 897 179
sales@bbshomes.com.au

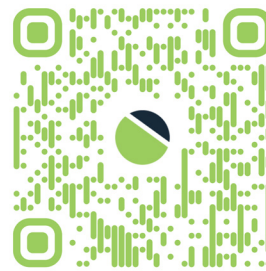
Living: 155.11sqm | Garage: 37.47sqm | Alfresco: 12.99sqm | Verandah: 8.13sqm

TOTAL: 201sqm



STANDARD INCLUSIONS:

- 2.55m high ceilings
- Reverse cycle ducted heating and cooling
- Instantaneous gas hot water system
- Stainless steel appliances to kitchen
- Stone benchtop to kitchen
- All floor coverings
- Water tank
- Fixed price building contract
- Architectural, engineering and hydraulic plans
- Energy efficiency reports
- Building applications, approvals and permits
- Private certifier inspections and approvals
- Home owner warranty insurance
- 7 year builder's structural warranty
- 90 day maintenance liability period



Scan the QR Code using your smart phone camera, to access 'The Kingsford' Plan straight to your device.

View our full inclusions and finishes at bbshomes.com.au

Disclaimer: floorplans and perspectives shown are artist's impressions only. Any references to size or dimensions are approximate and not intended to be precise. The information contained in this document/other accompanying material/mediums is provided for information purposes only. All rights and responsibilities of the seller, the builder and the buyer (including prices) will be contained in a land sale contract between the seller and the buyer and a home build contract between the buyer and the builder. The buyer should make their own enquiries and seek legal advice as to the terms of these contracts. The builder disclaims all liability with respect to all information and material provided within this document/other accompanying material/mediums. Copyright for floorplan designs are owned by the builder and must not be copied or distributed without the builder's prior written permission.